



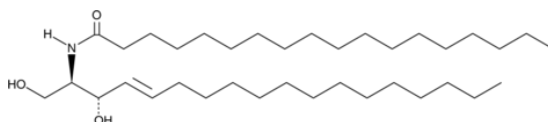
Certificate of Analysis

Product Name:	C18 L-erythro Ceramide (d18:1/18:0)
Cat. No.:	GC43050
Batch No.:	1
Chemical Name:	

PHYSICAL AND CHEMICAL PROPERTIES

Cas. No.:	252039-52-4
Molecular Formula:	C ₃₆ H ₇₁ NO ₃
Molecular Weight:	566
Storage:	Store at -20°C

Chemical Structure:



ANALYTICAL DATA

Appearance:	A solid
HNMR:	Consistent with structure
HPLC:	Consistent with structure
Purity:	>98.00%
Conclusion:	The product has been tested and complies with the given specifications.

Caution: Product has not been fully validated for medical applications. For research use only.

Tel: (909) 407-4943 Fax: (626) 353-8530 E-mail: tech@glpbio.com

Address: 10292 Central Ave. #205, Montclair, CA, USA